

TERRASSEN-BLITZ

Operating Manual

Decking Cleaning Machine

Type: TRM 382



- Operating instructions
- Safety guidelines
- Fault finding
- Overview of accessories
- Overview of spare parts
- Declaration of conformity

Illustrations and technical data are subject to further technical developments and are not binding.



Perfect decking cleaning technology through

Congratulations to have chosen our decking cleaner **TERRASSEN-BLITZ**. The machine is the ideal solution for the cleaning of deckings and other wooden outdoor surfaces. The special sanding and cleaning brush is the ideal solution for this item, that needs no humidity or chemical products and that cleans and smoothens the surface in one single passing. The machine is a quality product of the FG Maschinenbau GmbH and offers the certitude of a reliable and customerfriendly technology, ideal for the professional use as for the rental business



Special brush drum P60 hard
for all hard wood deckings



Special brush drum P80 smooth
for pine and other woods

TECHNICAL DATA

Machine

Voltage / frequency:	220 V / 50 Hz
Rated current:	13 A
Rated power:	2,2 kW
Duty classification:	S 1 (continuous duty)
Safety standard:	IP 54
Rated speed - motor:	2800 rpm
- sanding drum:	2000 rpm
Brushing drum diameter:	185 mm
Brushing drum width:	180 mm
Net weight:	55 kg
Max. handle vibration idle :	3,5 m/s ²
Max. handle vibration operation:	12,5 m/s ²

Dust aspiration

Voltage / frequency:	230 V / 50-60Hz
Amperage:	6 A
Power:	1200 W
Duty classification:	S1 (continuous duty)
Protection class:	1
Weight:	6 kg

Content of delivery

- 1 TERRASSEN-BLITZ incl. 1 special-brush drum P46, P60 or P80
- 1 Dust aspiration incl. hose
- 1 Carriage underlayer „TransPad“ for TERRASSEN-BLITZ
- 1 Lead 10 m, 3 x 2,5 mm²
- 2 Dust bag PE 800 mm x 600 mm
- 1 Tool bag with content:
 - 1 Tube key SW 32
 - 2 Hexagonal key (each 1 SK 5 and SK 6)
 - 1 Locking pin
 - 1 Turn pin
 - 2 Open-end wrench SW 24
 - 1 Frieze band for roller seal

General description

The **FG TERRASSEN-BLITZ** has been developed especially for the cleaning of wooden deckings. Those deckings get grey and dirty after a short time. Getting wet, they are slippery and dangerous. The innovative cleaning brush of the **FG TERRASSEN-BLITZ** takes away the dirt and the grey layer and gives back to the wood the natural beauty. If required, the surface can be treated with decking oil immediately.



Read this operating manual carefully before starting work !

Safety advices

Using the FG TERRASSEN-BLITZ national prescriptions for the protection against electrical hazards, injuries and inflammations are to be observed !

1. Keep your working place in order ! Disorder makes grow the risk of incidents!

2. Take work area into consideration.

Do not expose the TERRASSEN-BLITZ to rain. Do not use the TERRASSEN-BLITZ in damp or wet surroundings. Ensure good lighting conditions. Do not use the TERRASSEN-BLITZ in the vicinity of flammable liquids or gases.

3. Keep other people, especially children away from work area.

Provide, that children do not touch the machine and the electrical lead.

4. Protect yourself against electric shock

Avoid physical contact with earthed objects, for example pipes, radiators, ovens, refrigerators. For additional protection we recommend the use of a personal protector plug.

5. Do not overcharge your TERRASSEN-BLITZ!

You work more successful and sure in the indicated charge range.

6. Wear a dust mask

Wear a dust mask at least of class P2 when carrying out tasks that create a lot of dust e.g. when emptying the dust bag. The dust of tropical woods are especially dangerous, allergenic and irritating.

7. Wear appropriated clothes!

Do not wear too wide clothes and use solid shoes.

8. Ear protector

It is highly recommended that you wear an ear protector (special accessory) when sanding, due to the high level of noise during sanding operation 85 dB(A).

9. Employ the TERRASSEN-BLITZ only for the intended use.

10. Disconnect mains plug

When assembling or dismantling the machine, when it is not in use, or when carrying out maintenance work e.g. changing the brush drum, checking V-belt tension or using the transport undercarriage, you must disconnect the TERRASSEN-BLITZ from the mains.

11. Covers

The machine shall not be used without the appropriate covers. Do not touch rotating elements.

12. Do not leave any tools in the machine

Before switching the machine on check that all spanners and adjusting tools have been removed.

13. Always be alert

Keep the machine constantly under your observation while you work. Act sensibly. Do not operate the machine if you are unable to concentrate.

14. Examine your machine for signs of damage

Before commencing work always check carefully that all component parts are in perfect condition to serve their intended purpose. Check that all moving parts are in good working order, that they do not stick and are not damaged. All components must be assembled correctly and meet all requirements in order to guarantee perfect operation of the machine.

15. Prevent fire hazard

Always empty the dust bin on finishing work and before leaving the work area. Depose the dust in a safe place.

16. Reparation should be executed by an authorized repair service.

19. Electrical safety

The TERRASSEN-BLITZ is a device of the protection class 1, that means, that only leads and plugs with an earth conductor may be used. Reparation and replacement of plugs only by a qualified repair service.

20. Lead

Only use leads with a sufficient section. The minimal section of the cable is 2,5 mm².

Warning!

For your own safety only use equipment and special accessories specified in the operating manual. The use of tools or accessories other than those

recommended in the operating manual could mean a risk of personal injury.

For practical reasons these safety guidelines can not include detailed information to cover all possible working conditions, applications or maintenance work.

Consequently this operating manual contains essentially only that advice which is necessary if the TERRASSEN-BLITZ is used for its intended purpose.

Operating manual

Use of the machine

The **TERRASSEN-BLITZ** is delivered assembled and ready for use. You only have to do one thing:

Fix the frieze band (part 4) of roller seal (Fig. 7). You find the frieze band in the tool bag.

Before switching on the machine

Before starting, connect machine to the electric supply. Take care, that the voltage corresponds to the required voltage.

Make sure, that the brush does not touch the ground!



Injury hazard!

Never switch on the machine without the covers!

Adjustage of the grip

- Loosen the cylindric screws
- Swivel the grip in the required position
- Tighten the screws.

Dust suction

The TERRASSEN-BLITZ disposes over a powerful dust suction device. The content of the dust bin is 23 ltrs. If the bin is full, the dust aspiration loses power and must be emptied.

Emptying of the dust bin (Fig. 1 + 2):

- Switch off machine and aspirator
- Disconnect the machine from mains
- Take away dust filter and clean him
- Loosen the velcro strap
- Disconnect suction hose (press the red button on the fixture and tear the adaptor of the hose out.

Risc of inflammation!



Dust tends to auto-inflammation. Always empty the bin and stock the dust in a fire proof place!

Adjustment of the brush drum (Fig. 5)

- Lay the machine on the right side.
- Loosen der six pan nut
- Adjust the excentric wheel bolt
- Tighten the bolt counterwise
- If required, repeat the procedure

Replacement of the brush drum (Fig. 3 +4)

To change the drum, always use safety gloves.

- insert the locking pin in the ouverture of the cover, the pilley and the bearing bushing (Fig. 3)
➔ the drum is locked and the central nut can be opened.

Attention: Left hand thread

- use the tube key SW 32 and the turn pin (Fig. 4)
- tear the drum from the axis

To guarantee an correct repacement of the drum, pay attention to keep the axis and the thread free from dust. Repacing the drum, align the key slot with the key on the axis and tighten the hexagonal nut.

Attention: do not leave any tool on the machine!

Tighten the V-belt (Fig. 6)

- Switch off and disconnect the machine!
- Remove the cover sheet steel
- Open span lever, lift the motor up with the grip bar. The belt is tightened.
- Tighten the lever in the position.
- Control the V-belt tension (1-2 cm between the pulleys)
- Replace the sheet steel protection cover !

Fault finding

In the unlikely event of a fault occurring, this table will enable you to correct the following problems:

problem	Possible cause	correction
Motor does not start	No electricity	Check power supply
	Mains fuse has tripped	Check the 16 a fuse
		Lost of voltage because of insufficient cross-section (min. 2,5 mm ² , max. 50 m
Switch does not remain in START position	SVoltage under 190 V (because of too long alimentation lead)	Choose a shorter lead , check cross-section
Brush drum does not rotate	Insufficient belt tension	Tighten belt
	Rotten V-elt	Change V-belt
Low dust suction	Dust container is full	Empty dust container
	Dust filter clogged	Clean the dust filter
	Aspiration channel is blocked	Lift off suction hose and clean the channel
Machine cleans only on one side	BWron drum adjustment	Adjustment of the drum as shown in the manual
Impossibility of dismounting the drum	Non-respect of the lefthand thread	Attention: Lefthand thread

If the fault consists, please contact your retailer or durectly FG Maschinenbau GmbH

Tel.: (Mo – Fr 7⁰⁰ to 17⁰⁰ Uhr): **03594 / 7792600** or e-Mail: info@fg-online.net

Illustrations



Fig. 1



Emptying of the dust bin

Fig. 2



Fig. 3

Replacement of the drum -- attention: **Lefthand thread !**

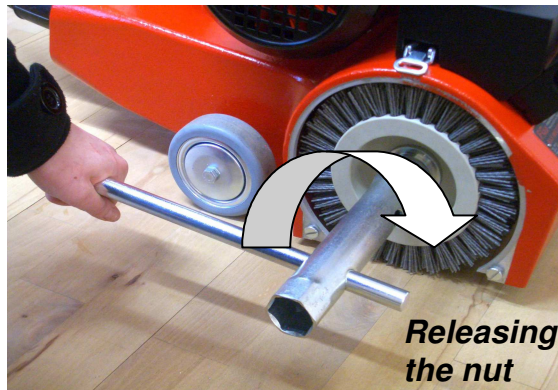


Fig. 4

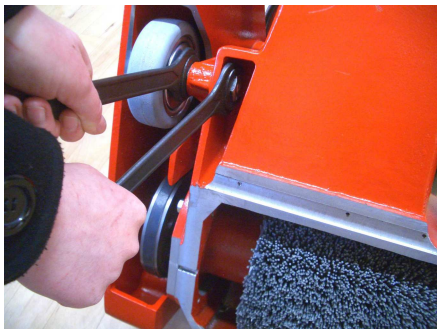


Fig. 5 adjustment of the drum



Tightening of the V-belt

Fig. 6

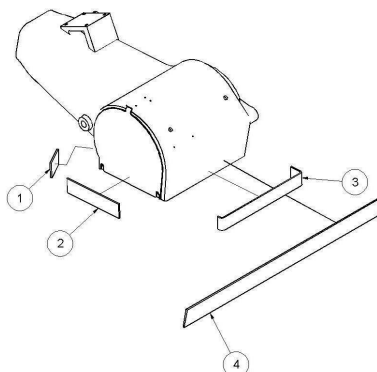
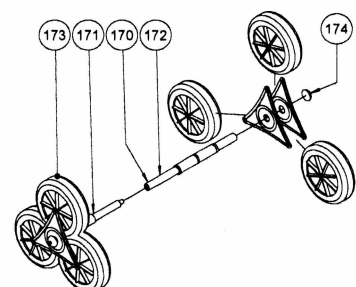
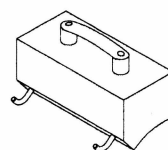
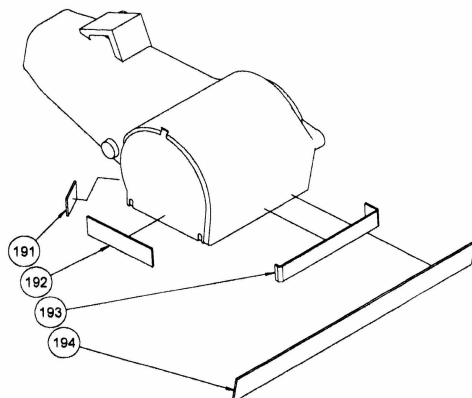
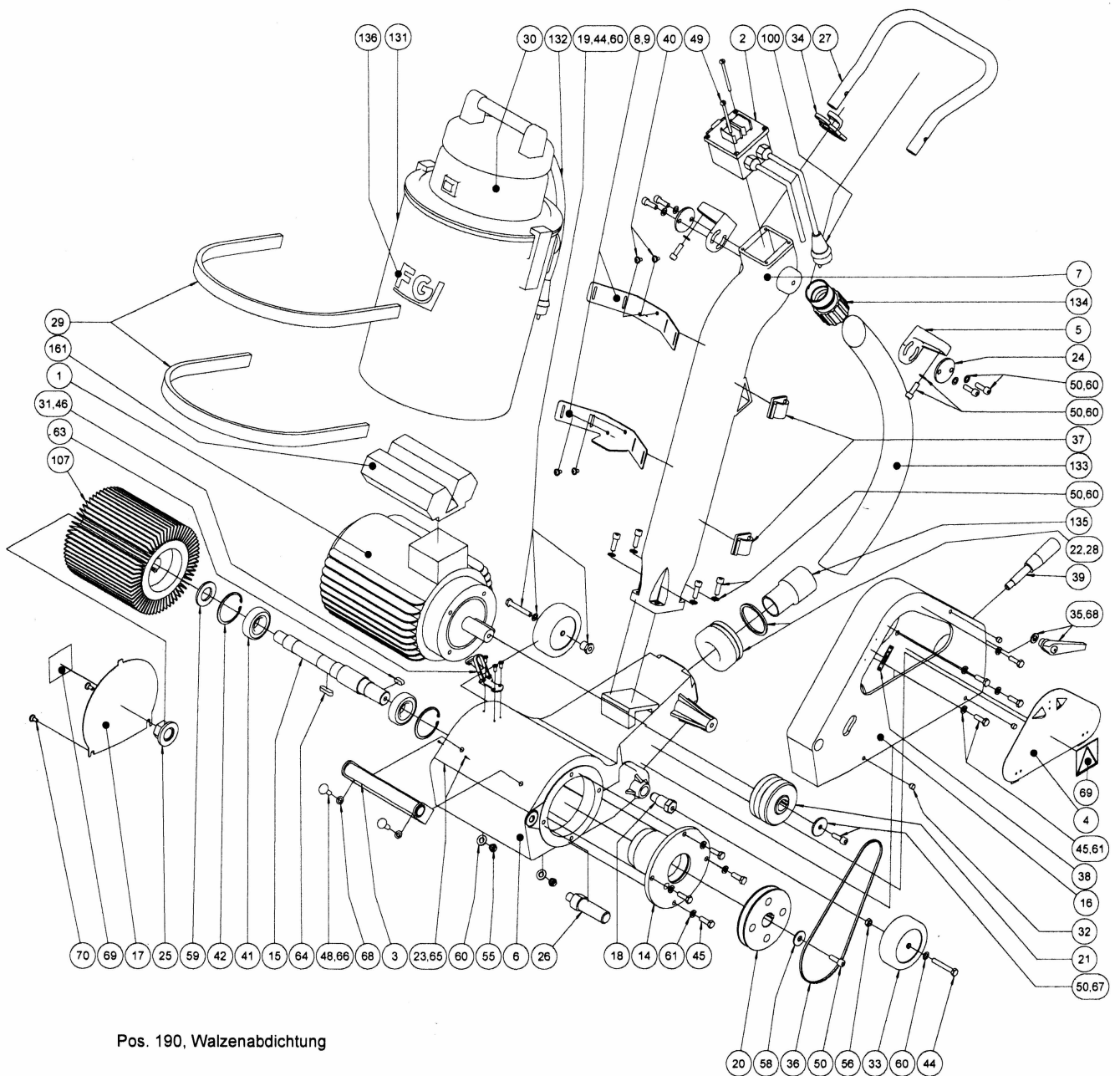


Fig. 7: fix part 4 frieze band of roller seal

Spare part overview

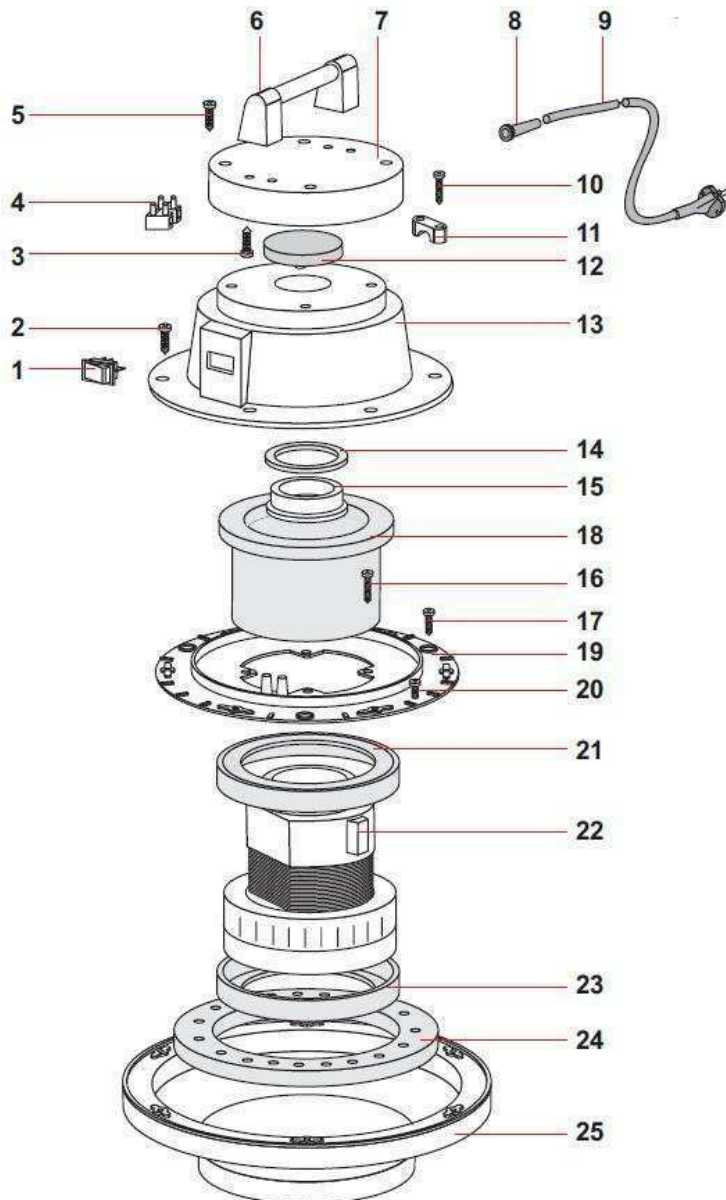


Spare part list

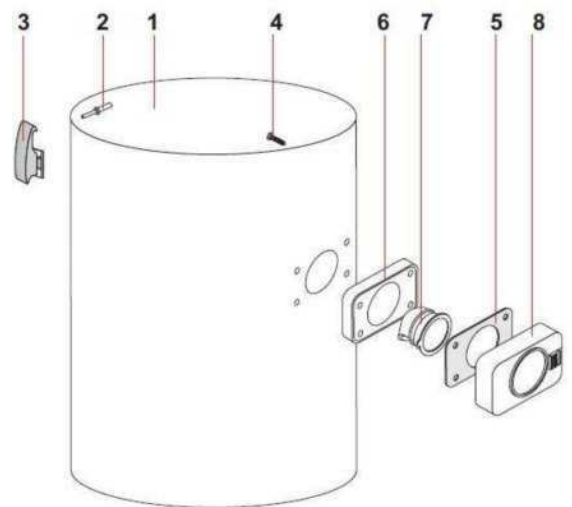
Pos.	Code	Description	Dimension
1	382 1100 00 01	Complete single phase motor composed of pos. 150 -159	2,2 kW, 230V, 50-60Hz
2	382 1011 00 00	Plug-switch combination composed of pos. 100	
3	201 1011 00 00	Transport handle	
4	200 1800 00 00	Protective plate	
5	200 1015 00 01	Bracket for grip	
6	382 1000 01 00	Terrassen-Blitz suction part	
7	382 1000 02 00	Terrassen-Blitz handle	
8	382 1000 08 00	Upper fastening plate	
9	382 1000 09 00	Lower fastening plate	
14	382 1000 10 00	Terrassen-Blitz bearing casing	
15	381 1000 04 00	Roller axle	
16	200 1200 01 00	Protection device	
17	382 1000 05 00	Terrassen-Blitz closure cover	
18	200 1000 04 01	Wheel pin	
19	381 1000 06 00	Wheel fastening	
20	200 1000 02 02	Pulley drum	for drum
21	382 1000 03 00	Pulley motor	for motor
22	382 1000 06 00	Suction sockets	
23	382 1000 07 01	Terrassen-Blitz nameplate	
24	200 1000 15 00	Pressure washer	
25	301 1200 01 00	Hexagonal nut for milling roller	M 22x1,5 links
26	200 1000 06 01	Bearing pin	
27	300 1016 00 00	Grip	
28	381 4100 00 00	Blocking ring for hose socket	60x10x5
29	05454	Fastening belt for suction machine	
30	382 1200 00 00	Dust suction for Terrassen-Blitz composed of pos.131 up to 135	only complete available
31	03585	Pressure closure	
32	01856	Stopper	
33	04467	Wheel	100x32x8
34	00702	Cable traction discharge	
35	00813	Adjustable tightening lever	
36	05745	Narrow atrapezoid belt	XPA 13 Lw 750
37	01276	Cable fastening clip	
38	00330	Turning direction arrow	
39	00820	Fastening bar	
40	03961	Screw with flange head	M6x10
41	07690	Ball grooved bearing	DIN 625 - 6206 - 2RS
42	00489	Safety ring	DIN 472 - 62x2
44	01229	Hexagonal screw	DIN 931 - M 8x55
45	00875	Hexagonal screw	DIN 933 - M 8x25
46	00142	Countersunk screw	DIN 965 - M 3x6
48	00878	Round head screw	DIN 603 - M8x20
49	05398	Ridged screw	DIN 7985 - M5x80
50	00592	Cylindrical screw	DIN 912 - M 8x25
55	01657	Hexagonal nut	DIN 980 - M 8
56	00881	Hexagonal nut	DIN 934 - M16x1,5
57	01125	Washer	DIN 125 - 8,4
58	200 1000 35 00	Washer	D40xd8,4x4
59	03694	Washer	DIN 125 - 28
60	00885	Elastic washer	DIN 137 - B 8
63	00077	Cotter pin	DIN 6885 - A 8x7x20

64	03529	Cotter pin	DIN 6885 - A 8x7x32
65	00194	Round headed striated rivet	DIN 1476 - 2x5
67	200 1000 35 00	Discharge resistor	D38xd8,4x3,5
68	00412	Washer	DIN 125 - 10,5
69	03075	Sticker warning of hand injuries	
70	03599	Flat head screw	DIN 923 - M 6x3
100	01155	Plug	Euro-Norm
105	382 6101 00 00	Transpad for Terrassen-Blitz	
106	382 6110 00 01	Additional weight 19 kg	19 kg
107	382 6210 01 00	Brushing roller P60 hard	185x180x27
	382 6210 02 00	Brushing roller P80 soft	185x180x27
	382 6210 04 00	Brushing roller, V2A	185x180x27
131	03939	Sucker for Terrassen-Blitz	230V/1000W, 23L
132	306 4110 00 00	Connection cable for suction machine	H05 3G1
133	382 1200 01 00	Suction hose for Terrassen-Blitz	dmr 38mm, 700 lang
134	03941	Sucker side connection part	
135	03942	Machine side connection part	
150	01542	Flange	
151	01546	Front bearing	
152	03095	Frame with stator	
153	01544	Rotor with axle	
154	01547	Rear bearing	
155	01300	Rear bearing cover	
156	01548	Piston hoop	
157	01545	Fan wheel	
158	01543	Fan lid	
159	01551	Strut	
161	382 1300 00 00	Condenser box, complete composed of pos. 162 to 166	
162	01859	Capacitor box	
163	03012	Capacitor	60µF
164	03711	Connection block	10 mm²
165	03571	Discharge resistor	M20x1,5
166	03443	Discharge resistor	220 kOhm
170	201 6100 00 01	Transport device for staircase composed of pos. 171 - 174	
171	201 6100 01 01	Short axle	
172	201 6100 02 00	Long axle	
173	00545	Centre of spoked wheel	
174	00585	Fast fixer	
179	382 4100 00 00	Complete tool bag composed of pos. 180 - 186	
180	200 4000 02 00	Fastening plug	
181	200 4000 03 00	Turning plug	
182	00441	Hexagonal wrench	32mm
183	00850	Single ended wrench	24mm
184	00835	Tool bag	
185	00848	Hexagonal key	5mm
186	00847	Hexagonal key	6mm
190	382 1500 00 00	Roller seal composed of pos. 171 - 174	
191	382 1500 01 00	Velcro 1	35x55mm
192	382 1500 02 00	Velcro 2	35x150mm
193	382 1500 03 00	Velcro 3	30x270mm
194	382 1500 04 00	Frieze band	50x560mm

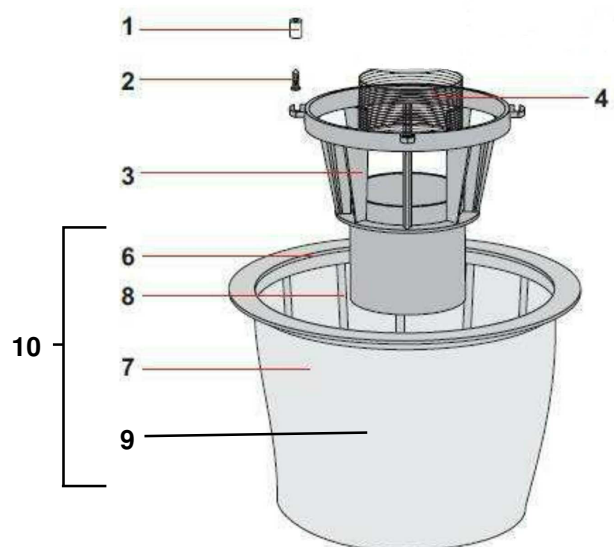
Motor head, cplt.



Dust bin



Swimmer unit



Pos.	Art.-No.	Description	Dimension
09269 Motor head, cpl., comp. of pos. 1-25 and 60			
1	06222	Switch, splash water proof	
2	06223	Screw	5x20-X-VZS
3	06223	Screw	5x20-X-VZS
4	06224	Clamp block	
5	06223	Screw	5x20-X-VZS
6	06225	Grip motor head	
7	06226	Cover motor housing	
8	06227	Ply protection	
9	306 4110 00 00	Cable with plug	
10	06223	Screw	5x20-X-VZS
11	06229	Traction relieve bow for cable	
12	06230	Filter fan cooling	MTP 65x95
13	06231	Motor cover	
14	06232	Seal joint	H8x85x65
15	06233	Distance ring fan 1400 W	
16	06223	Screw	5x20-X-VZS
17	06235	Screw	5x14-X-VZS
18	06234	Insonorisation	MTP/65-160-120 H 88
19	06236	Distance ring	WET 30/50/25/45.01
20	06237	Screw	5x8-X-VZ
21	06238	Motor seal	
22	06239-1	Motor cpl. 1400 W	
23	06238	Motor seal	
24	06240	Insonorisation	MTP/65-18-230-145
25	06241	Motor base	
60	06242	Anti-parasite chip	1/2 W-680 kOhm
Swimmer unit, comp. of pos. 1-9			
1	06243	distance tube	8mm-PE
2	06244	Screw	
3	06245	swimmer housing high - 99	Pos. 3 + 4 only available together
4	06246	Security mesh ring	
10	111004	Filter unit cpl. comp. of pos. 6-9	only complete available
6	06248	Ring for filtre reception	not available separately
7	06249	Insert filter conique 300	not available separately
8	06250	Filter support conique 300	not available separately
9	06837	Nylon filter	available separately
Dust bin, cpl., comp. of pos. 1-8			
1	06251	Bin 300	AISI 430
2	06252	Bolt	5x11
3	06253	Tensionner	
4	06254	Screw	5x30
5	06255	Interface	dmr 38
6	06256	Fixation piece	R205
7	06257	Fill nozzle	

FG Maschinenbau GmbH

FG FLOORTEC

Neustädter Str. 5a

01877 Bischofswerda

Tel. +49(0)3594 7792600 Fax +49(0)3594 7792601

Declaration of EU Conformity
in accordance to the CE machinery directive 2006/42/EG, annexe II A

We herewith declare, that the floor cleaning machine designed as follows

Item name: **Decking cleaning machine TERRASSEN-BLITZ**

Type: **TRM 382**

Serial-Nr.: 2024

corresponds to the following prescriptions:

EG-Directives: EG-Machinery directive 2006/42/EG
EM Directive (2004/108/EG)

Applicated harmonized prescriptions, published in the Official Journal of the EU ¹ :

EN ISO 12100, EN ISO 13857, DIN EN 349-Ed.2008

The responsible for the composition of the technical documentations:

Friedrich Kirchner (CE-Responsible)

Bischofswerda, 01.01.2024



Informations to the undersigner: Friedrich Kirchner, Managing Director

¹ **This statement is rendered void if the machine is altered without our consent.**

¹ For the complete list of applied standards and technical specifications, see factory standard CE-TRM382.

Special Accessory

Transport undercarriage

Code-Nr.: 201 6100 00 01

- For an easy transport of the machine also on stairs by one person
- fitting for all FG machines

TransPad

Code-Nr.: 382 6101 01 00

- For a safe transport of the machine in a vehicle, evites slipping in the car

Additional weight

Code-Nr.: 382 6110 00 00

- Weight 19 kg
- Reducing physical effort, alson on very dirty deckings
- Higher abrasion effect